



KENTUCKY

SUMMARY

- Kentucky is in the red zone for cases, indicating 101 or more new cases per 100,000 population last week, with the 21st highest rate in the country. Kentucky is in the yellow zone for test positivity, indicating a rate between 5.0% and 7.9%, with the 15th highest rate in the country.
- Kentucky has seen an increase in new cases and a decrease in test positivity over the last week.
- The following three counties had the highest number of new cases over the last 3 weeks: 1. Jefferson County, 2. Fayette County, and 3. Warren County. These counties represent 35.7% of new cases in Kentucky.
- 47% of all counties in Kentucky have moderate or high levels of community transmission (yellow, orange, or red zones), with 12% having high levels of community transmission (red zone).
- During the week of Sep 14 - Sep 20, 13% of nursing homes had at least one new resident COVID-19 case, 25% had at least one new staff COVID-19 case, and 3% had at least one new resident COVID-19 death.
- Kentucky had 111 new cases per 100,000 population in the last week, compared to a national average of 93 per 100,000.
- Current staff deployed from the federal government as assets to support the state response are: 1 to support operations activities from FEMA.
- Between Sep 19 - Sep 25, on average, 160 patients with confirmed COVID-19 and 456 patients with suspected COVID-19 were reported as newly admitted each day to hospitals in Kentucky. An average of greater than 95% of hospitals reported either new confirmed or new suspected COVID patients each day during this period.

RECOMMENDATIONS

- Effects of mitigation efforts are fragile. Develop age-segmented and geographic relevant messaging to keep Kentuckians compliant with mitigation efforts, including wearing face masks.
- Rapidly scale up testing to identify individuals with COVID-19 with support for isolation to reduce community transmission. Target testing in areas with persistent high levels of transmission and rapidly increasing incidence from east to northwestern parts of the state.
- Decrease introduction of COVID-19 in nursing homes through on-site inspection of infection control practices at skilled nursing facilities.
- Abbott BinaxNOW supplies will be distributed in the coming weeks; develop a plan for weekly surveillance in critical populations to monitor the degree of community spread among K-12 teachers; staff working at nursing homes, assisted living, senior living facilities, and other congregate living settings including correctional facilities; and first responders. Historically Black Colleges and Universities will be receiving testing supplies this week.
- In university settings, use wastewater surveillance on and off campus to identify areas with high viral load for targeted testing. Establish routine testing of student body to find cases early, prevent spread, and keep students on campus. Provide these data to students, faculty, parents, and community on a public dashboard.
- Specific, detailed guidance on community mitigation measures can be found on the [CDC website](https://www.cdc.gov).

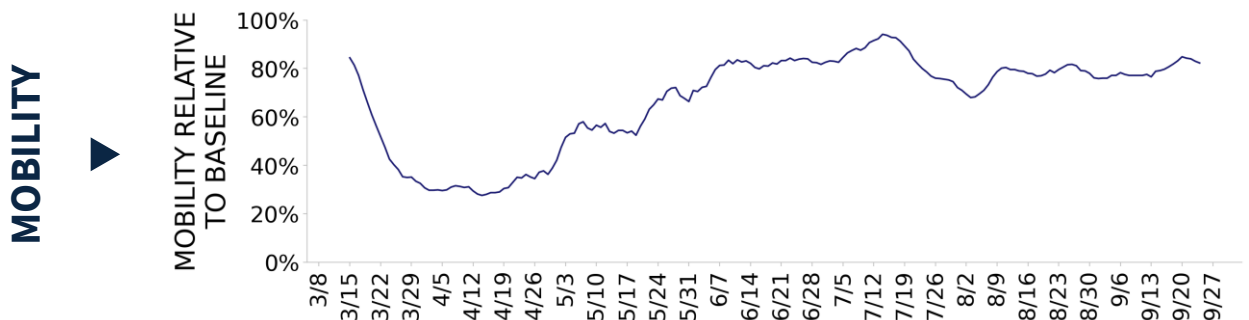




KENTUCKY

STATE REPORT | 09.27.2020

	STATE, LAST WEEK	STATE, % CHANGE FROM PREVIOUS WEEK	FEMA/HHS REGION, LAST WEEK	UNITED STATES, LAST WEEK
NEW COVID-19 CASES (RATE PER 100,000)	4,962 (111)	+13%	74,425 (111)	305,449 (93)
VIRAL (RT-PCR) LAB TEST POSITIVITY RATE	7.2%	-1.0%*	6.0%	4.3%
TOTAL VIRAL (RT-PCR) LAB TESTS (TESTS PER 100,000)	59,696** (1,336)	-7%**	992,978** (1,484)	6,381,570** (1,944)
COVID-19 DEATHS (RATE PER 100,000)	47 (1.1)	-16%	1,740 (2.6)	5,143 (1.6)
SNFs WITH ≥1 NEW RESIDENT COVID-19 CASE (≥1 NEW STAFF CASE)	13% (25%)	+2%* (+2%*)	17% (30%)	9% (20%)
SNFs WITH ≥1 NEW RESIDENT COVID-19 DEATH	3%	-2%*	7%	4%



* Indicates absolute change in percentage points.

** Due to delayed reporting, this figure may underestimate total diagnostic tests and week-on-week changes in diagnostic tests.

DATA SOURCES – Additional data details available under METHODS**Note:** Some dates may have incomplete data due to delays in reporting. Data may be backfilled over time, resulting in week-to-week changes.**Cases and Deaths:** State values are calculated by aggregating county-level data from USAFacts; therefore, the values may not match those reported directly by the state. Data is through 9/25/2020; last week is 9/19 - 9/25, previous week is 9/12 - 9/18.**Testing:** CELR (COVID-19 Electronic Lab Reporting) state health department-reported data through 9/23/2020. Last week is 9/17 - 9/23, previous week is 9/10 - 9/16.**Mobility:** Descartes Labs. This data depicts the median distance moved across a collection of mobile devices to estimate the level of human mobility within a county. The 100% represents the baseline mobility level prior to the pandemic; lower percent mobility indicates less population movement. Data is anonymized and provided at the county level. Data through 9/24/2020.**SNFs:** Skilled nursing facilities. National Healthcare Safety Network. Data are reported separately for cases among residents and staff. Last week is 9/14-9/20, previous week is 9/7-9/13.



KENTUCKY

STATE REPORT | 09.27.2020

COVID-19 COUNTY AND METRO ALERTS*

Top 12 shown in table (full lists below)

	METRO AREA (CBSA) LAST WEEK	COUNTY LAST WEEK
LOCALITIES IN RED ZONE	3 Bowling Green Murray Mount Sterling	14 Warren Laurel Union Calloway Knott Grayson Marshall Estill Clay Jackson Meade Montgomery
LOCALITIES IN ORANGE ZONE	7 Louisville/Jefferson County Richmond-Berea London Elizabethtown-Fort Knox Glasgow Evansville Central City	22 Jefferson Daviess Hardin Oldham Henderson Barren Bullitt Campbell Franklin Shelby Logan Muhlenberg
LOCALITIES IN YELLOW ZONE	7 Lexington-Fayette Clarksville Owensboro Frankfort Campbellsville Bardstown Mayfield	20 Fayette Madison Christian Kenton Boone Greenup Whitley Scott Nelson Jessamine Knox Taylor

All Red Counties: Warren, Laurel, Union, Calloway, Knott, Grayson, Marshall, Estill, Clay, Jackson, Meade, Montgomery, Wayne, Leslie

All Orange Counties: Jefferson, Daviess, Hardin, Oldham, Henderson, Barren, Bullitt, Campbell, Franklin, Shelby, Logan, Muhlenberg, Allen, Green, Bourbon, Russell, Webster, Rowan, Spencer, Breckinridge, Hart, Henry

All Yellow Counties: Fayette, Madison, Christian, Kenton, Boone, Greenup, Whitley, Scott, Nelson, Jessamine, Knox, Taylor, Trigg, Graves, Caldwell, Letcher, Carter, Clinton, McCreary, Anderson

* Localities with fewer than 10 cases last week have been excluded from these alerts.

Note: Lists of red, orange, and yellow localities are sorted by the number of new cases in the last 3 weeks, from highest to lowest. Some dates may have incomplete data due to delays in reporting. Data may be backfilled over time, resulting in week-to-week changes.

DATA SOURCES – Additional data details available under METHODS

Cases and Deaths: State values are calculated by aggregating county-level data from USAFacts; therefore, the values may not match those reported directly by the state. Data is through 9/25/2020; last week is 9/19 - 9/25, three weeks is 9/5 - 9/25.

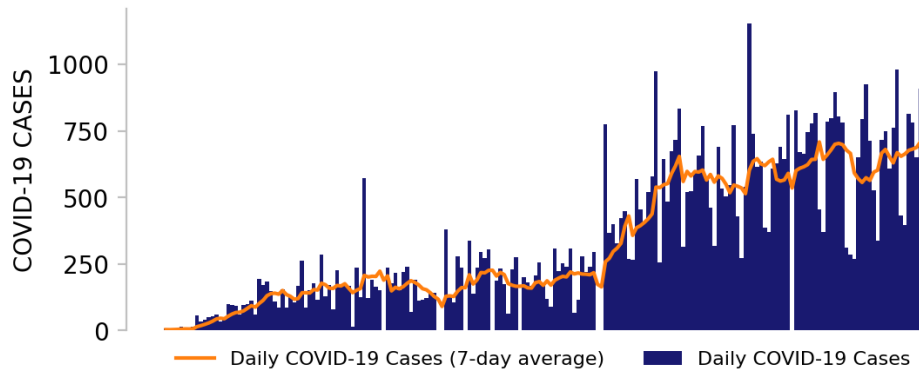
Testing: CELR (COVID-19 Electronic Lab Reporting) state health department-reported data through 9/23/2020. Last week is 9/17 - 9/23.



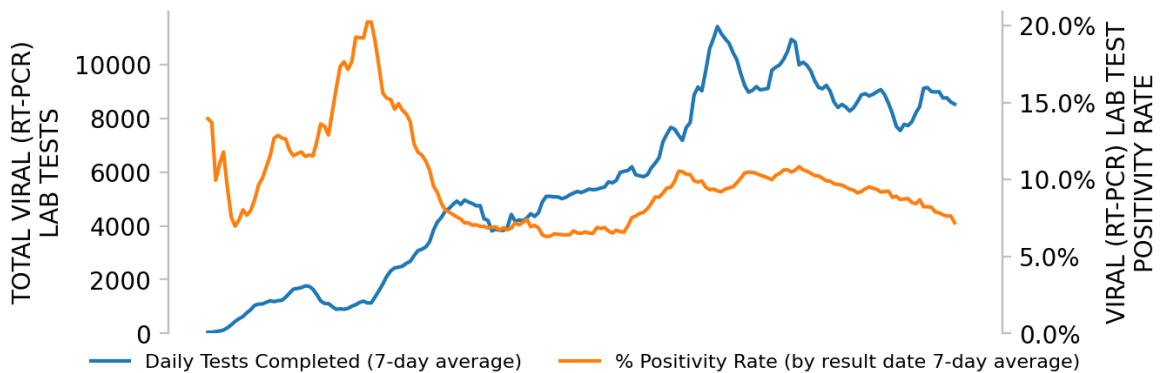
KENTUCKY

STATE REPORT | 09.27.2020

NEW CASES

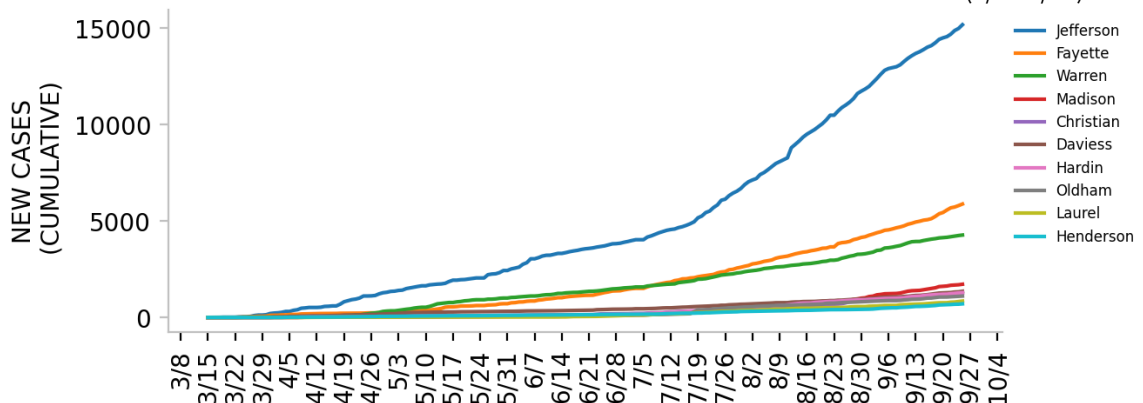


TESTING



Top counties based on greatest number of new cases in last three weeks (9/5 - 9/25)

TOP COUNTIES



DATA SOURCES – Additional data details available under METHODS

Note: Some dates may have incomplete data due to delays in reporting. Data may be backfilled over time, resulting in week-to-week changes.

Cases: State values are calculated by aggregating county-level data from USAFacts; therefore, the values may not match those reported directly by the state. Data is through 9/25/2020.

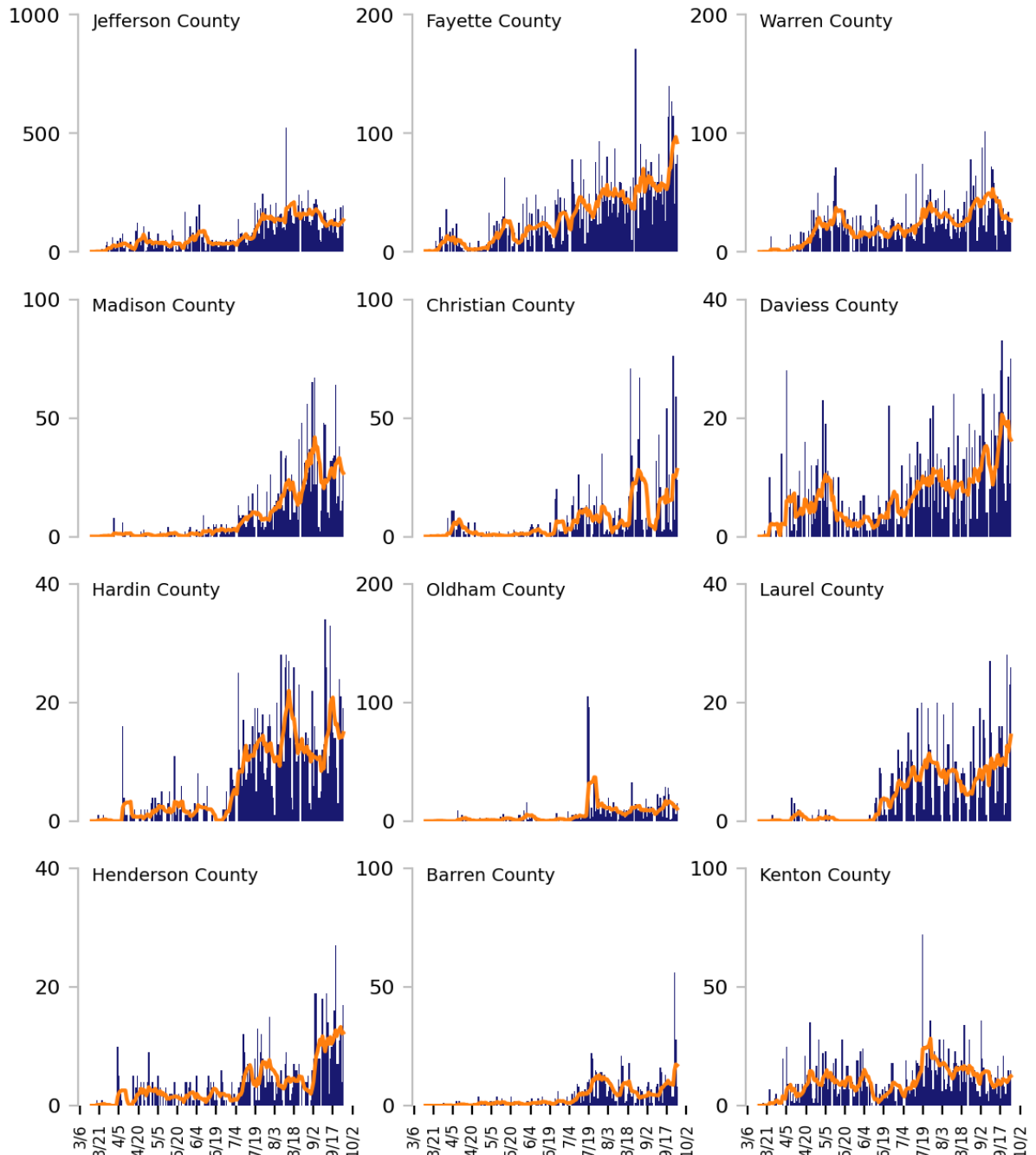
Testing: CELR (COVID-19 Electronic Lab Reporting) state health department-reported data through 9/23/2020.



Top 12 counties based on number of new cases in the last 3 weeks

— Daily COVID-19 Cases (7-day average) ■ Daily COVID-19 Cases

TOTAL DAILY CASES



DATA SOURCES – Additional data details available under METHODS

Cases: State values are calculated by aggregating county-level data from USAFacts; therefore, the values may not match those reported directly by the state. Data is through 9/25/2020. Last 3 weeks is 9/5 - 9/25.

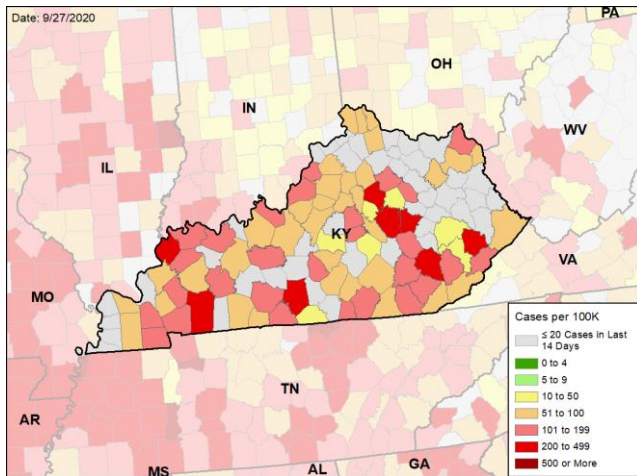


KENTUCKY

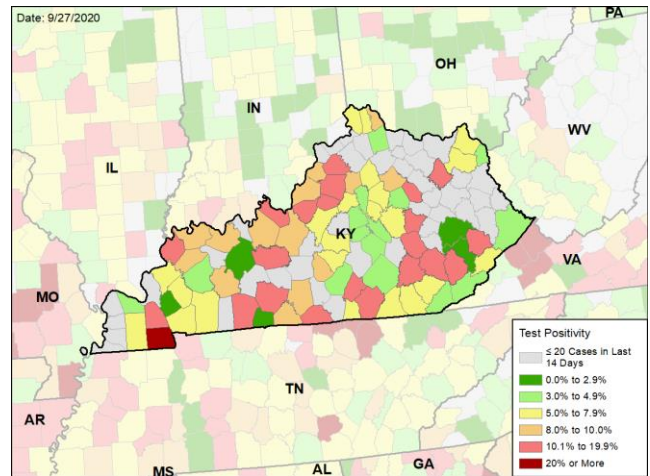
STATE REPORT | 09.27.2020

CASE RATES AND VIRAL LAB TEST POSITIVITY DURING THE LAST WEEK

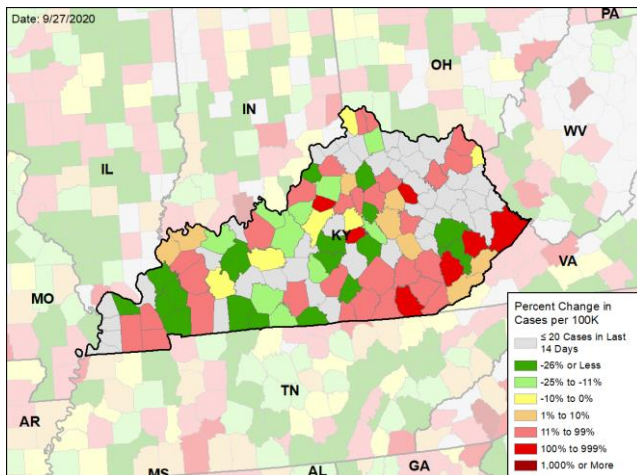
NEW CASES PER 100,000 DURING THE LAST WEEK



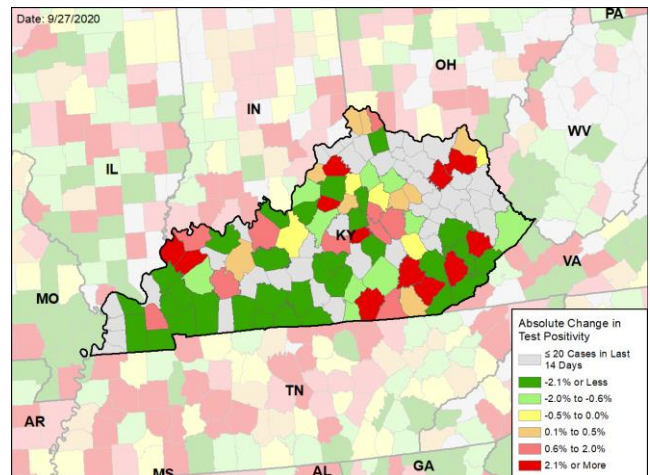
VIRAL (RT-PCR) LABORATORY TEST POSITIVITY DURING THE LAST WEEK



WEEKLY CHANGE IN NEW CASES PER 100,000



WEEKLY CHANGE IN VIRAL (RT-PCR) LABORATORY TEST POSITIVITY



DATA SOURCES – Additional data details available under METHODS

Note: Some dates may have incomplete data due to delays in reporting. Data may be backfilled over time, resulting in week-to-week changes.

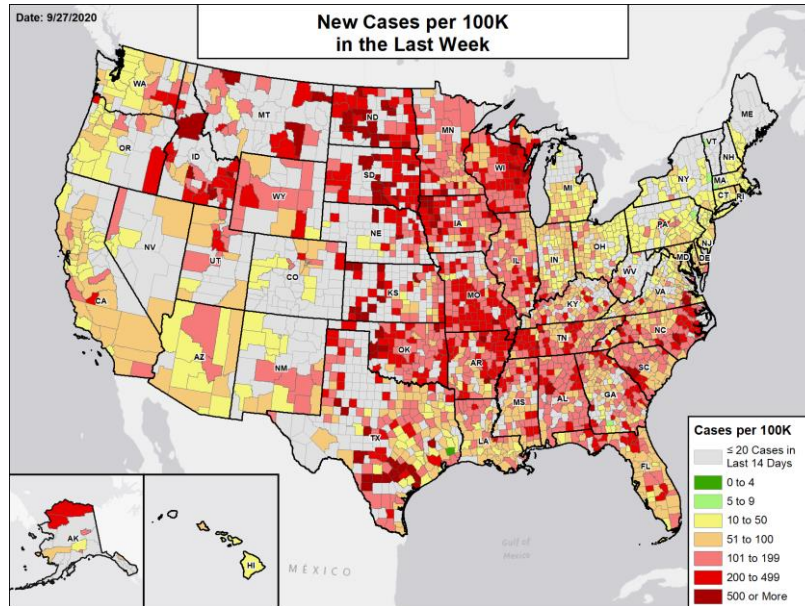
Cases: State values are calculated by aggregating county-level data from USAFacts; therefore, the values may not match those reported directly by the state. Data is through 9/25/2020. Last week is 9/19 - 9/25, previous week is 9/12 - 9/18.

Testing: CELR (COVID-19 Electronic Lab Reporting) state health department-reported data through 9/23/2020. Last week is 9/17 - 9/23, previous week is 9/10 - 9/16.

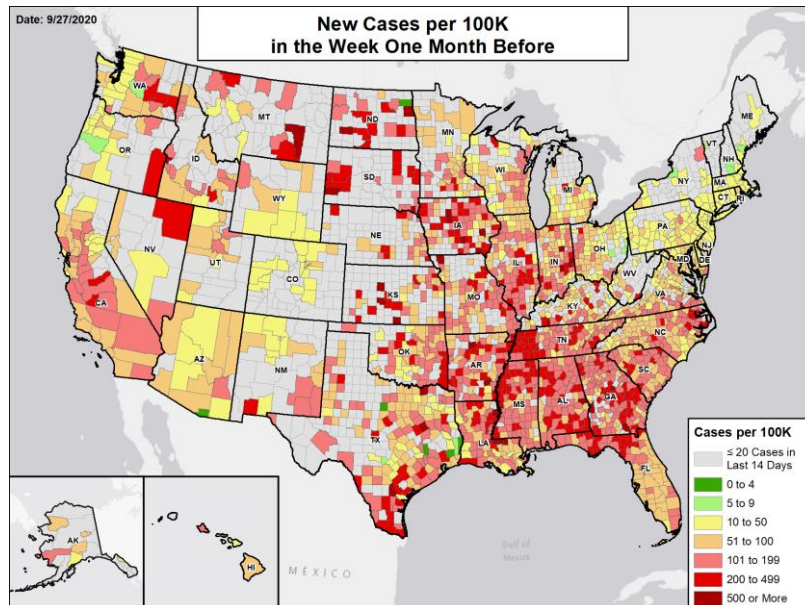


National Picture

NEW CASES PER 100,000 LAST WEEK



NEW CASES PER 100,000 IN THE WEEK ONE MONTH BEFORE



DATA SOURCES

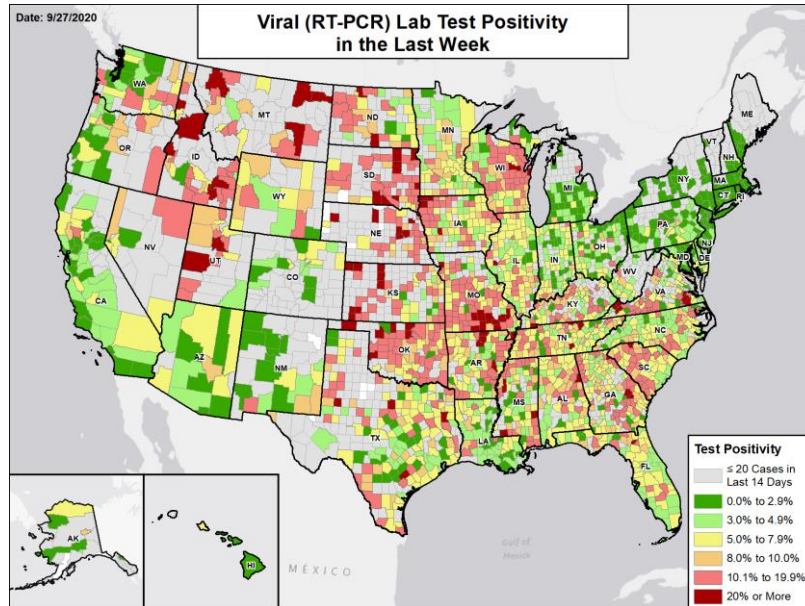
Note: Some dates may have incomplete data due to delays in reporting. Data may be backfilled over time, resulting in week-to-week changes.

Cases: County-level data from USAFacts through 9/25/2020. Last week is 9/19 - 9/25; the week one month before is 8/22 - 8/28.

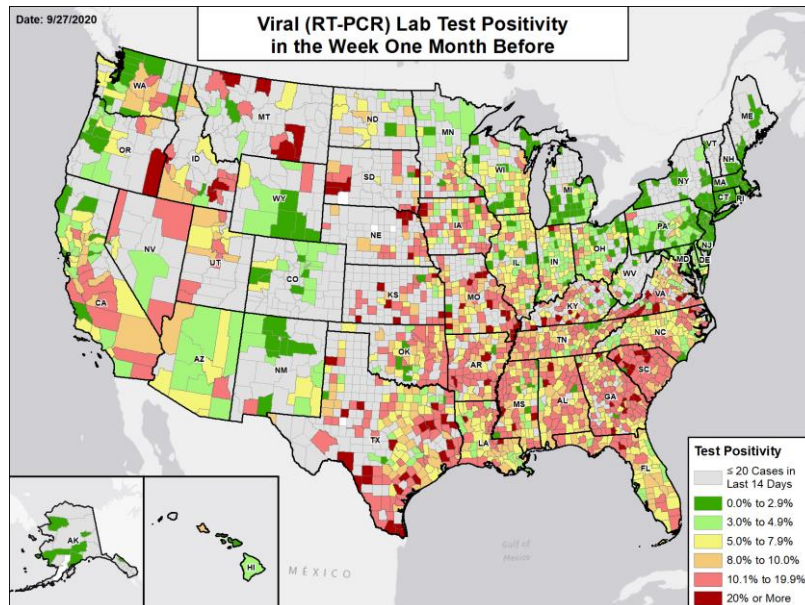


National Picture

VIRAL (RT-PCR) LAB TEST POSITIVITY LAST WEEK



VIRAL (RT-PCR) LAB TEST POSITIVITY IN THE WEEK ONE MONTH BEFORE



DATA SOURCES

Note: Some dates may have incomplete data due to delays in reporting. Data may be backfilled over time, resulting in week-to-week changes.

Testing: Combination of CELR (COVID-19 Electronic Lab Reporting) state health department-reported data and HHS Protect laboratory data (provided directly to Federal Government from public health labs, hospital labs, and commercial labs) through 9/23/2020. Last week is 9/17 - 9/23; the week one month before is 8/20 - 8/26.



METHODS

STATE REPORT | 09.27.2020

COLOR THRESHOLDS: Results for each indicator should be taken in context of the findings for related indicators (e.g., changes in case incidence and testing volume). Values are rounded before color classification.

Metric	Dark Green	Light Green	Yellow	Orange	Red
New cases per 100,000 population per week	≤4	5 – 9	10 – 50	51 – 100	≥101
Percent change in new cases per 100,000 population	≤-26%	-25% – -11%	-10% – 0%	1% – 10%	≥11%
Diagnostic test result positivity rate	≤2.9%	3.0% – 4.9%	5.0% – 7.9%	8.0% – 10.0%	≥10.1%
Change in test positivity	≤-2.1%	-2.0% – -0.6%	-0.5% – 0.0%	0.1% – 0.5%	≥0.6%
Total diagnostic tests resulted per 100,000 population per week	≥2001	1001 – 2000	750 – 1000	500 – 749	≤499
Percent change in tests per 100,000 population	≥26%	11% – 25%	1% – 10%	-10% – 0%	≤-11%
COVID-19 deaths per 100,000 population per week	≤0.1	0.2 – 0.4	0.5 – 1.0	1.1 – 2.0	≥2.1
Percent change in deaths per 100,000 population	≤-26%	-25% – -11%	-10% – 0%	1% – 10%	≥11%
Skilled Nursing Facilities with at least one resident COVID-19 case, death	0%		1% – 5%		≥6%
Change in SNFs with at least one resident COVID-19 case, death	≤-2%		-1% – 1%		≥2%

DATA NOTES

- Some dates may have incomplete data due to delays in reporting. Data may be backfilled over time, resulting in week-to-week changes. It is critical that states provide as up-to-date data as possible.
- Cases and deaths:** County-level data from USAFacts as of 17:12 EDT on 09/27/2020. State values are calculated by aggregating county-level data from USAFacts; therefore, values may not match those reported directly by the state. Data are reviewed on a daily basis against internal and verified external sources and, if needed, adjusted. Last week data are from 9/19 to 9/25; previous week data are from 9/12 to 9/18; the week one month before data are from 8/22 to 8/28.
- Testing:** The data presented represent viral COVID-19 laboratory diagnostic and screening test (reverse transcription polymerase chain reaction, RT-PCR) results—not individual people—and exclude antibody and antigen tests, unless stated otherwise. CELR (COVID-19 Electronic Lab Reporting) state health department-reported data are used to describe county-level viral COVID-19 laboratory test (RT-PCR) result totals when information is available on patients' county of residence or healthcare providers' practice location. HHS Protect laboratory data (provided directly to Federal Government from public health labs, hospital labs, and commercial labs) are used otherwise. Some states did not report on certain days, which may affect the total number of tests resulted and positivity rate values. Because the data are deidentified, total viral (RT-PCR) laboratory tests are the number of tests performed, not the number of individuals tested. Viral (RT-PCR) laboratory test positivity rate is the number of positive tests divided by the number of tests performed and resulted. Resulted tests are assigned to a timeframe based on this hierarchy of test-related dates: 1. test date; 2. result date; 3. specimen received date; 4. specimen collection date. Resulted tests are assigned to a county based on a hierarchy of test-related locations: 1. patient residency; 2. provider facility location; 3. ordering facility location; 4. performing organization location. States may calculate test positivity other using other methods. Last week data are from 9/17 to 9/23; previous week data are from 9/10 to 9/16; the week one month before data are from 8/20 to 8/26. HHS Protect data is recent as of 12:34 EDT on 09/27/2020. Testing data are inclusive of everything received and processed by the CELR system as of 19:00 EDT on 09/26/2020.
- Mobility:** Descartes Labs. These data depict the median distance moved across a collection of mobile devices to estimate the level of human mobility within a locality. The 100% represents the baseline mobility level prior to the pandemic; lower percent mobility indicates less population movement. Data is anonymized and provided at the locality level. Data is recent as of 13:00 EDT on 09/27/2020 and is through 9/24/2020.
- Hospitalizations:** Unified hospitalization dataset in HHS Protect. This figure may differ from state data due to differences in hospital lists and reporting between federal and state systems. These data exclude psychiatric, rehabilitation, and religious non-medical hospitals. In addition, hospitals explicitly identified by states/regions as those from which we should not expect reports were excluded from the percent reporting figure. The data presented represents raw data provided; we are working diligently with state liaisons to improve reporting consistency. Data is recent as of 17:28 EDT on 09/27/2020.
- Skilled Nursing Facilities:** National Healthcare Safety Network (NHSN). Data report resident and staff cases independently. Quality checks are performed on data submitted to the NHSN. Data that fail these quality checks or appear inconsistent with surveillance protocols may be excluded from analyses. Data presented in this report are more recent than data publicly posted by CMS. Last week is 9/14-9/20, previous week is 9/7-9/13.
- County and Metro Area Color Categorizations**
 - Red Zone:** Those core-based statistical areas (CBSAs) and counties that during the last week reported both new cases at or above 101 per 100,000 population, and a lab test positivity result at or above 10.1%.
 - Orange Zone:** Those CBSAs and counties that during the last week reported both new cases between 51–100 per 100,000 population, and a lab test positivity result between 8.0–10.0%, or one of those two conditions and one condition qualifying as being in the “Red Zone.”
 - Yellow Zone:** Those CBSAs and counties that during the last week reported both new cases between 10–50 per 100,000 population, and a lab test positivity result between 5.0–7.9%, or one of those two conditions and one condition qualifying as being in the “Orange Zone” or “Red Zone.”