



## KENTUCKY

### SUMMARY

- Kentucky is in the red zone for cases, indicating 101 or more new cases per 100,000 population last week, with the 12th highest rate in the country. Kentucky is in the orange zone for test positivity, indicating a rate between 8.0% and 10.0%, with the 12th highest rate in the country.
- Kentucky has seen an increase in new cases and stability in test positivity over the last week.
- The following three counties had the highest number of new cases over the last 3 weeks: 1. Fayette County, 2. Jefferson County, and 3. Warren County. These counties represent 41.5% of new cases in Kentucky.
- 63% of all counties in Kentucky have moderate or high levels of community transmission (yellow, orange, or red zones), with 26% having high levels of community transmission (red zone).
- During the week of Sep 28 - Oct 4, 14% of nursing homes had at least one new resident COVID-19 case, 31% had at least one new staff COVID-19 case, and 3% had at least one new resident COVID-19 death.
- Kentucky had 173 new cases per 100,000 population in the last week, compared to a national average of 100 per 100,000.
- Current staff deployed from the federal government as assets to support the state response are: 1 to support operations activities from FEMA.
- Between Oct 3 - Oct 9, on average, 276 patients with confirmed COVID-19 and 453 patients with suspected COVID-19 were reported as newly admitted each day to hospitals in Kentucky. An average of 95% of hospitals reported either new confirmed or new suspected COVID patients each day during this period.

### RECOMMENDATIONS

- We have included cases, test positivity, and deaths by month in the back of your packet to show the time sequence in Kentucky and the country as a whole. These demonstrate the impact of comprehensive mitigation efforts when implemented effectively and that partial or incomplete mitigation leads to prolonged community spread and increased fatalities.
- Retail establishments are enforcing mitigation efforts by adjusting their businesses so very few transmissions occur in those settings; the majority of cases are from interactions at home with friends and family. Kentuckians should know that such gatherings must be limited in size and include both masks and social distancing.
- Use the Abbott BinaxNOW for surveillance testing in the same populations weekly. This will provide information on local transmission changes. Establish and deploy targeted testing teams (not drive-through testing) who can be rapidly deployed to communities based on signals from surveillance testing. Populations for surveillance can include K-12 teachers, fire and police force, nursing home, and correctional facility staff.
- Antivirals and antibodies have the most impact when used early in hospital admissions (within 48 hours). Ensure hospitals are effectively administering these medications to prevent morbidity and mortality.
- Work with university students to keep cases low, with the goal of low transmission in preparation for Thanksgiving. Implement antibody testing to understand fraction of students who have been infected and plan for spring semester accordingly. Test all university students before dismissing them for Thanksgiving.
- Specific, detailed guidance on community mitigation measures can be found on the [CDC website](#).



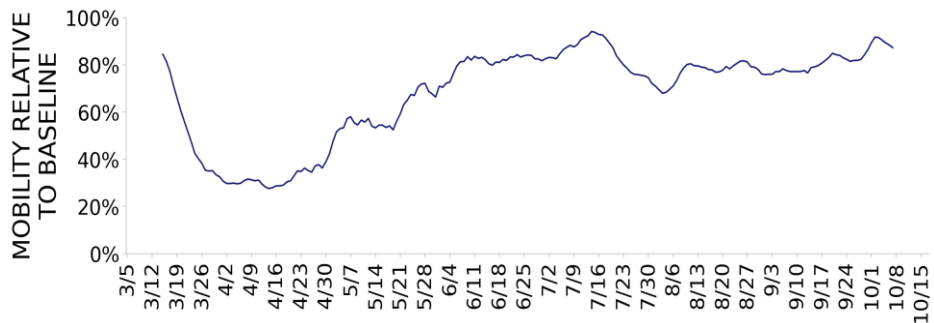


# KENTUCKY

STATE REPORT | 10.11.2020

	STATE, LAST WEEK	STATE, % CHANGE FROM PREVIOUS WEEK	FEMA/HHS REGION, LAST WEEK	UNITED STATES, LAST WEEK
NEW COVID-19 CASES (RATE PER 100,000)	7,731 (173)	+37%	75,980 (114)	327,190 (100)
VIRAL (RT-PCR) LAB TEST POSITIVITY RATE	8.3%	-0.3%*	6.1%	5.8%
TOTAL VIRAL (RT-PCR) LAB TESTS (TESTS PER 100,000)	64,828** (1,451)	+10%**	1,024,987** (1,532)	6,936,223** (2,113)
COVID-19 DEATHS (RATE PER 100,000)	46 (1.0)	-6%	1,603 (2.4)	4,908 (1.5)
SNFs WITH ≥1 NEW RESIDENT COVID-19 CASE (≥1 NEW STAFF CASE)	14% (31%)	+3%* (-1%*)	14% (27%)	10% (21%)
SNFs WITH ≥1 NEW RESIDENT COVID-19 DEATH	3%	-1%*	5%	4%

## MOBILITY



\* Indicates absolute change in percentage points.

\*\* Due to delayed reporting, this figure may underestimate total diagnostic tests and week-on-week changes in diagnostic tests.

**DATA SOURCES** – Additional data details available under METHODS

**Note:** Some dates may have incomplete data due to delays in reporting. Data may be backfilled over time, resulting in week-to-week changes.

**Cases and Deaths:** State values are calculated by aggregating county-level data from USAFacts; therefore, the values may not match those reported directly by the state. Data is through 10/9/2020; last week is 10/3 - 10/9, previous week is 9/26 - 10/2.

**Testing:** CELR (COVID-19 Electronic Lab Reporting) state health department-reported data through 10/7/2020. Last week is 10/1 - 10/7, previous week is 9/24 - 9/30.

**Mobility:** Descartes Labs. This data depicts the median distance moved across a collection of mobile devices to estimate the level of human mobility within a county. The 100% represents the baseline mobility level prior to the pandemic; lower percent mobility indicates less population movement. Data is anonymized and provided at the county level. Data through 10/7/2020.

**SNFs:** Skilled nursing facilities. National Healthcare Safety Network. Data are reported separately for cases among residents and staff. Last week is 9/28-10/4, previous week is 9/21-9/27.



# KENTUCKY

STATE REPORT | 10.11.2020

## COVID-19 COUNTY AND METRO ALERTS\*

Top 12 shown in table (full lists below)

### METRO AREA (CBSA) LAST WEEK

### COUNTY LAST WEEK

LOCALITIES  
IN RED  
ZONE

8

▲ (+2)

London  
Bowling Green  
Owensboro  
Evansville  
Murray  
Bardstown  
Mayfield  
Central City

31

▲ (+5)

Warren  
Christian  
Daviess  
Henderson  
Laurel  
Whitley  
Bullitt  
Calloway  
Pike  
Jessamine  
Union  
Shelby

LOCALITIES  
IN ORANGE  
ZONE

3

▼ (-2)

Louisville/Jefferson County  
Elizabethtown-Fort Knox  
Mount Sterling

10

▼ (-10)

Jefferson  
Hardin  
Knott  
Estill  
Montgomery  
Rowan  
Ohio  
Clinton  
Hancock  
Monroe

LOCALITIES  
IN YELLOW  
ZONE

9

▲ (+1)

Lexington-Fayette  
Richmond-Berea  
Clarksville  
Huntington-Ashland  
Frankfort  
Madisonville  
Paducah  
Campbellsville  
Middlesborough

35

▲ (+6)

Fayette  
Madison  
Kenton  
Boone  
Hopkins  
Oldham  
Scott  
McCracken  
Boyd  
Franklin  
Knox  
Campbell

Change from previous week's alerts:

▲ Increase

■ Stable

▼ Decrease

**All Red Counties:** Warren, Christian, Daviess, Henderson, Laurel, Whitley, Bullitt, Calloway, Pike, Jessamine, Union, Shelby, Allen, Graves, Nelson, Muhlenberg, Webster, Clay, Logan, Meade, McCreary, Wayne, Bourbon, Larue, Fulton, Leslie, Hart, Todd, Nicholas, McLean, Washington

**All Yellow Counties:** Fayette, Madison, Kenton, Boone, Hopkins, Oldham, Scott, McCracken, Boyd, Franklin, Knox, Campbell, Greenup, Letcher, Marshall, Carter, Bell, Adair, Taylor, Rockcastle, Garrard, Jackson, Anderson, Russell, Marion, Grant, Trigg, Spencer, Morgan, Butler, Powell, Lewis, Breckinridge, Wolfe, Martin

\* Localities with fewer than 10 cases last week have been excluded from these alerts.

**Note:** Lists of red, orange, and yellow localities are sorted by the number of new cases in the last 3 weeks, from highest to lowest. Some dates may have incomplete data due to delays in reporting. Data may be backfilled over time, resulting in week-to-week changes.

**DATA SOURCES** – Additional data details available under METHODS

**Cases and Deaths:** State values are calculated by aggregating county-level data from USAFacts; therefore, the values may not match those reported directly by the state. Data is through 10/9/2020; last week is 10/3 - 10/9, three weeks is 9/19 - 10/9.

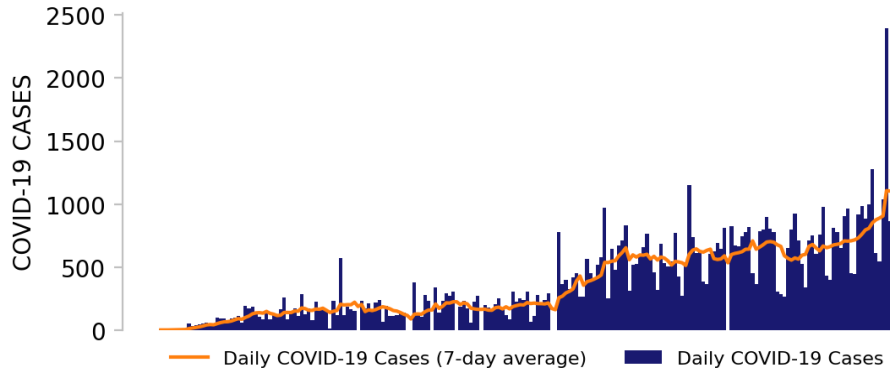
**Testing:** CELR (COVID-19 Electronic Lab Reporting) state health department-reported data through 10/7/2020. Last week is 10/1 - 10/7.



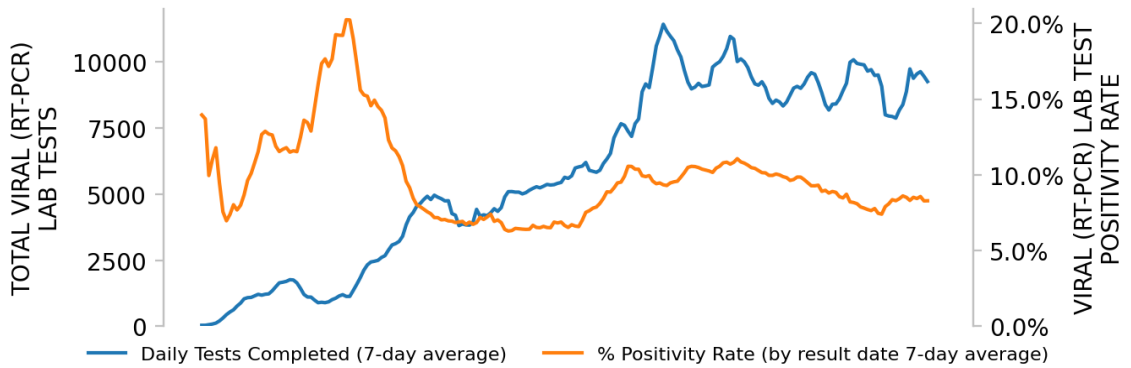
# KENTUCKY

STATE REPORT | 10.11.2020

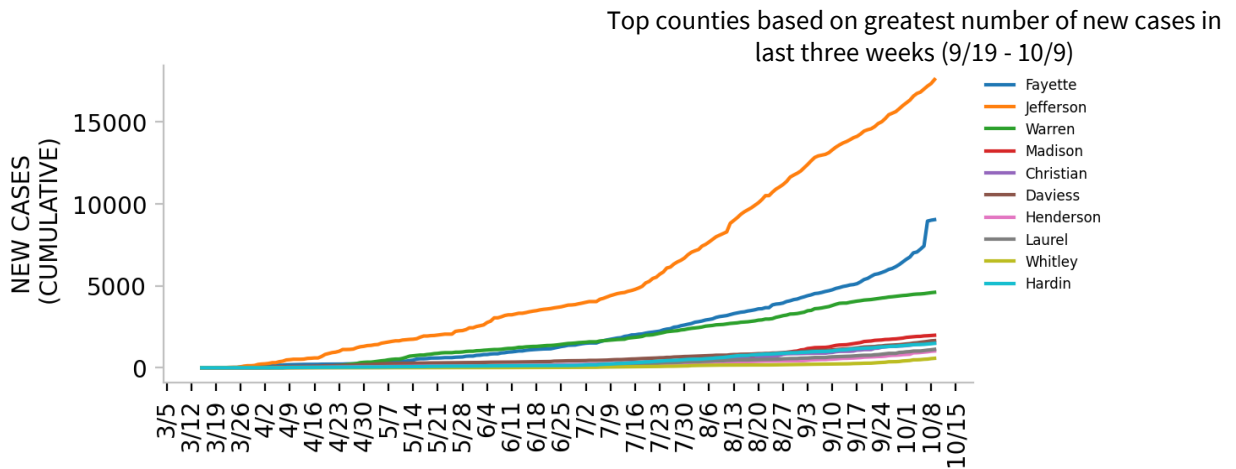
## NEW CASES



## TESTING



## TOP COUNTIES



**DATA SOURCES** – Additional data details available under METHODS

**Note:** Some dates may have incomplete data due to delays in reporting. Data may be backfilled over time, resulting in week-to-week changes.

**Cases:** State values are calculated by aggregating county-level data from USAFacts; therefore, the values may not match those reported directly by the state. Data is through 10/9/2020.

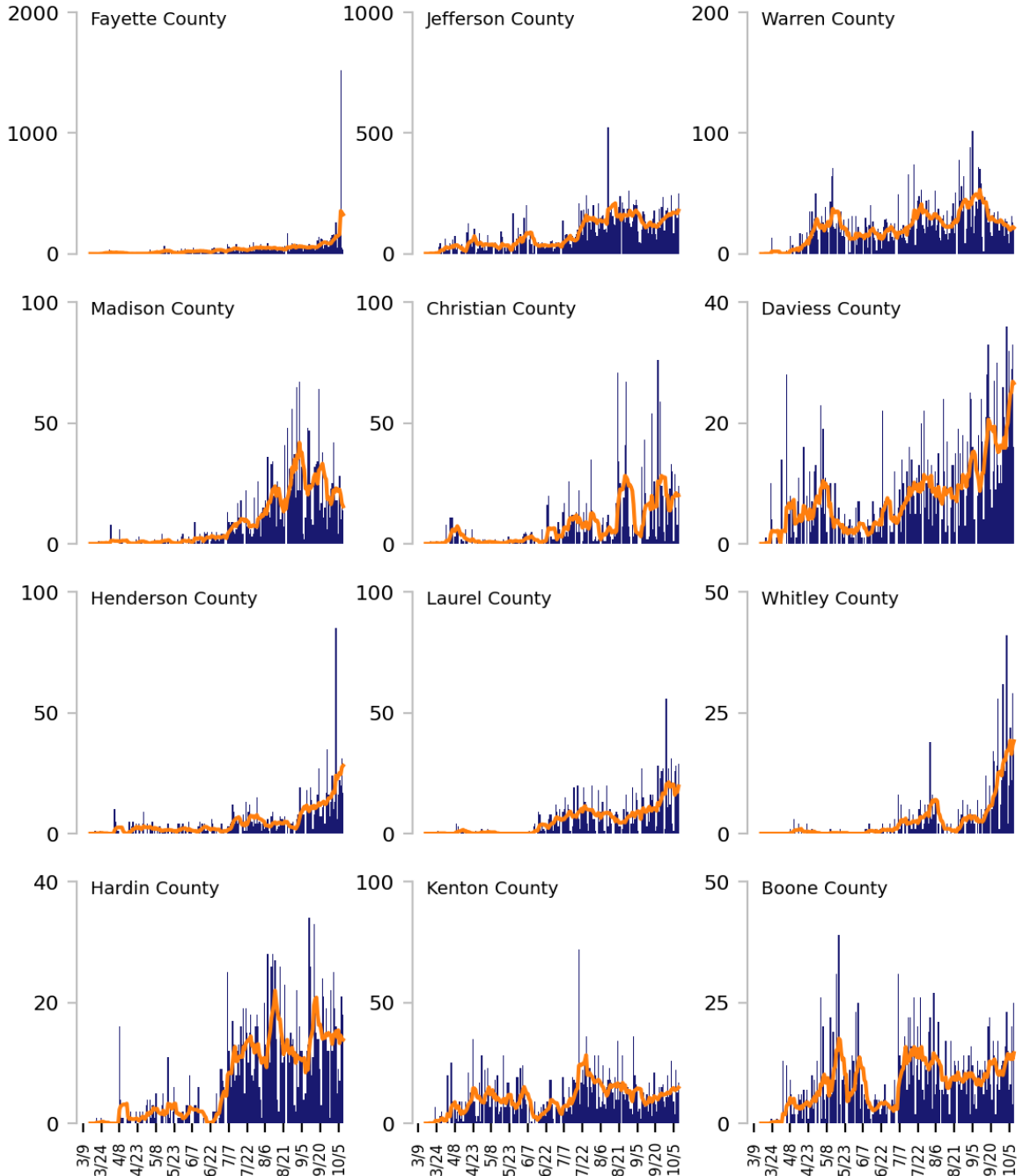
**Testing:** CELR (COVID-19 Electronic Lab Reporting) state health department-reported data through 10/7/2020.



# Top 12 counties based on number of new cases in the last 3 weeks

— Daily COVID-19 Cases (7-day average)    ■ Daily COVID-19 Cases

TOTAL DAILY CASES



DATA SOURCES – Additional data details available under METHODS

Cases: State values are calculated by aggregating county-level data from USAFacts; therefore, the values may not match those reported directly by the state. Data is through 10/9/2020. Last 3 weeks is 9/19 - 10/9.

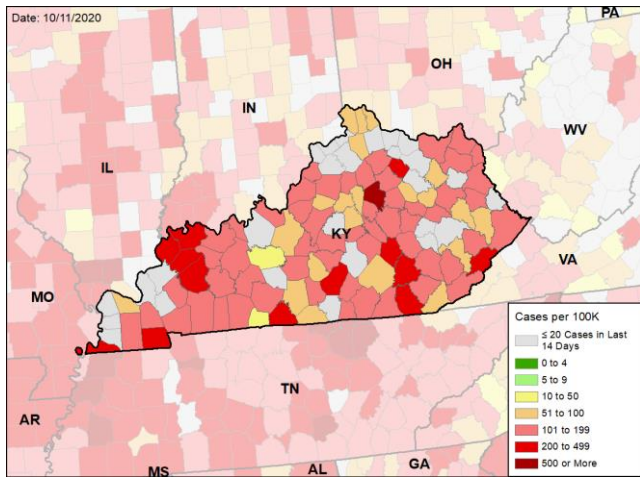


# KENTUCKY

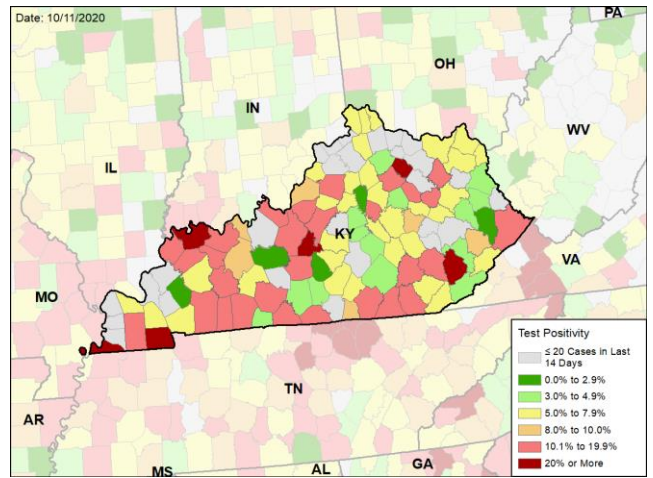
STATE REPORT | 10.11.2020

## CASE RATES AND VIRAL LAB TEST POSITIVITY DURING THE LAST WEEK

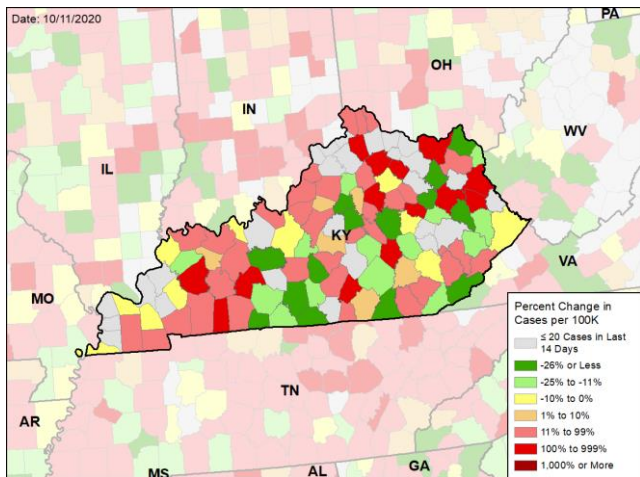
### NEW CASES PER 100,000 DURING THE LAST WEEK



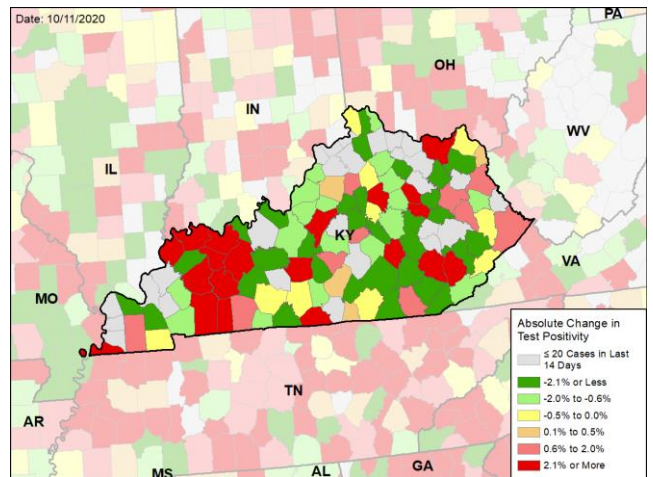
### VIRAL (RT-PCR) LABORATORY TEST POSITIVITY DURING THE LAST WEEK



### WEEKLY CHANGE IN NEW CASES PER 100,000



### WEEKLY CHANGE IN VIRAL (RT-PCR) LABORATORY TEST POSITIVITY



**DATA SOURCES** – Additional data details available under **METHODS**

**Note:** Some dates may have incomplete data due to delays in reporting. Data may be backfilled over time, resulting in week-to-week changes.

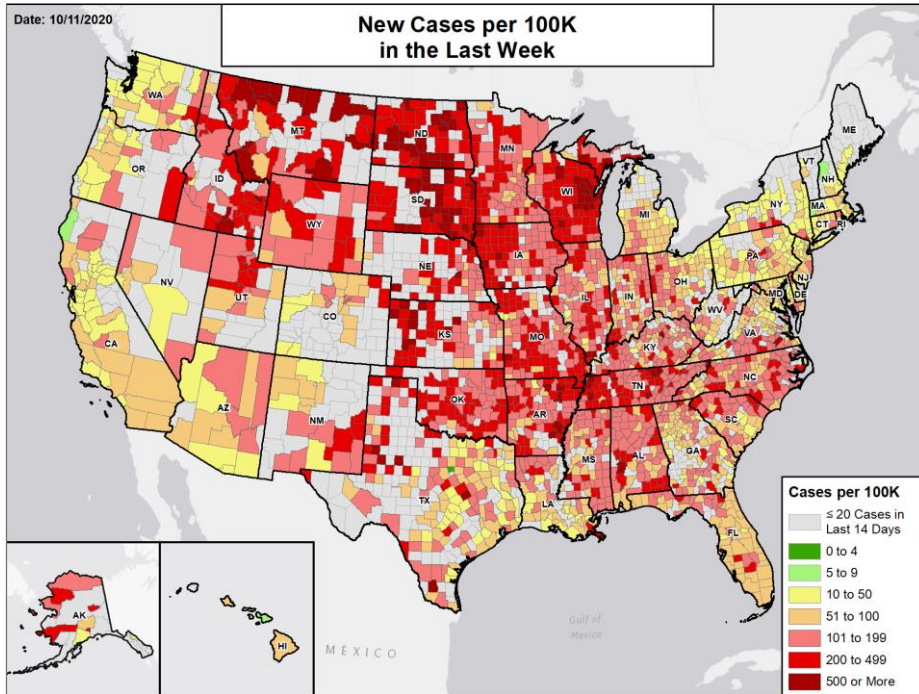
**Cases:** State values are calculated by aggregating county-level data from USAFacts; therefore, the values may not match those reported directly by the state. Data is through 10/9/2020. Last week is 10/3 - 10/9, previous week is 9/26 - 10/2.

**Testing:** CELR (COVID-19 Electronic Lab Reporting) state health department-reported data through 10/7/2020. Last week is 10/1 - 10/7, previous week is 9/24 - 9/30.



# National Picture

## NEW CASES PER 100,000 LAST WEEK

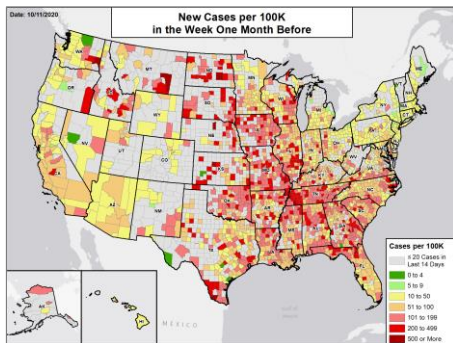


## NATIONAL RANKING OF NEW CASES PER 100,000 LAST WEEK

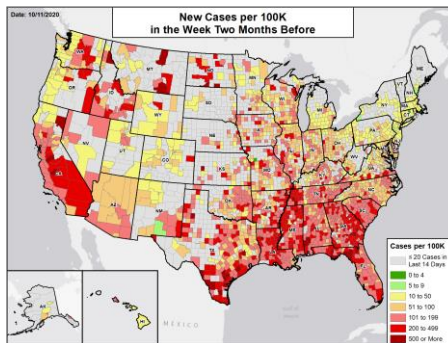
National Rank	State	National Rank	State
1	ND	27	TX
2	SD	28	DE
3	MT	29	CO
4	WI	30	VA
5	UT	31	FL
6	ID	32	OH
7	IA	33	GA
8	WY	34	MI
9	OK	35	WV
10	TN	36	LA
11	AR	37	MD
12	KY	38	PA
13	KS	39	NJ
14	NE	40	MA
15	MO	41	DC
16	AK	42	AZ
17	MN	43	CA
18	MS	44	OR
19	AL	45	NY
20	IN	46	WA
21	SC	47	HI
22	IL	48	CT
23	NC	49	NH
24	RI	50	ME
25	NV	51	VT
26	NM		

## NEW CASES PER 100,000 IN THE WEEK:

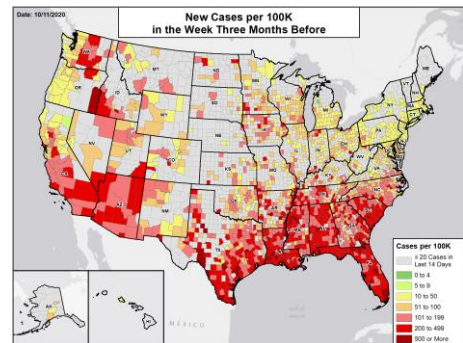
### ONE MONTH BEFORE



### TWO MONTHS BEFORE



### THREE MONTHS BEFORE



## DATA SOURCES

**Note:** Some dates may have incomplete data due to delays in reporting. Data may be backfilled over time, resulting in week-to-week changes.

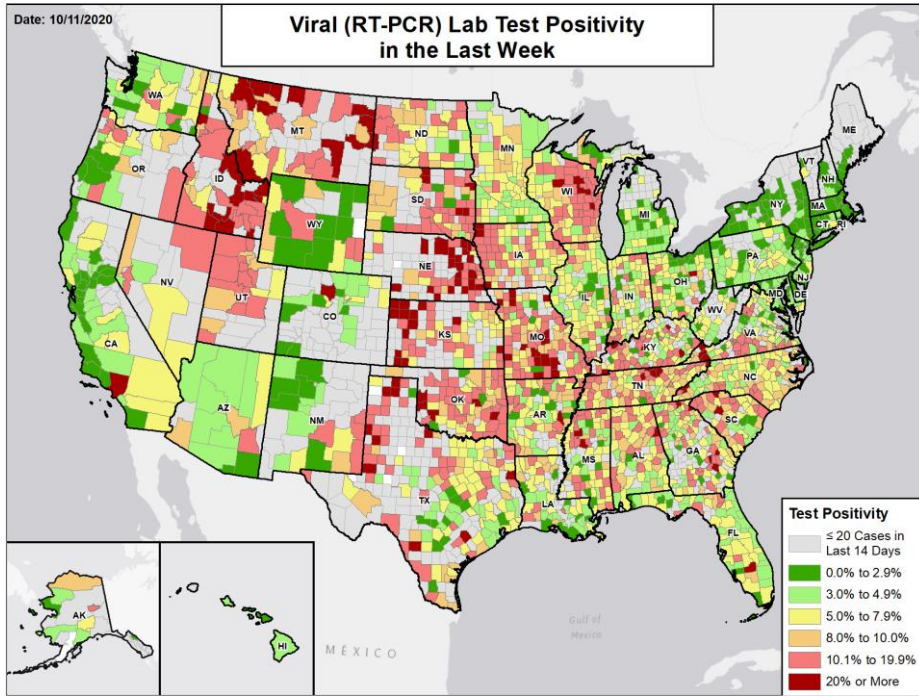
**Cases:** County-level data from USAFacts through 10/9/2020. Last week is 10/3 - 10/9; the week one month before is 9/5 - 9/11; the week two months before is 8/8 - 8/14; the week three months before is 7/11 - 7/17.



# National Picture

## VIRAL (RT-PCR) LAB TEST POSITIVITY LAST WEEK

## NATIONAL RANKING OF TEST POSITIVITY LAST WEEK



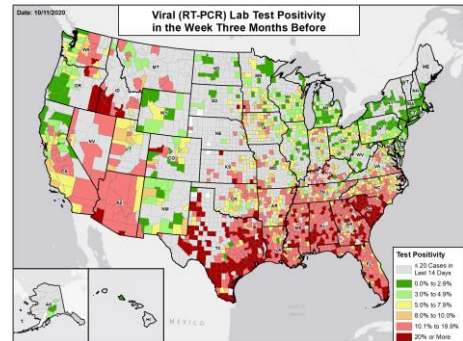
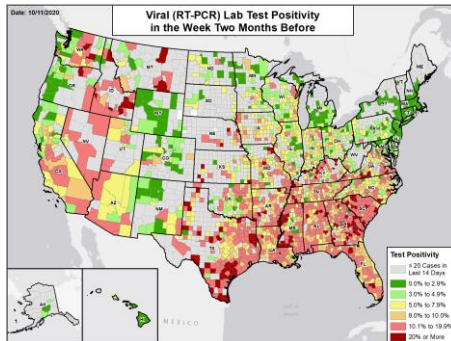
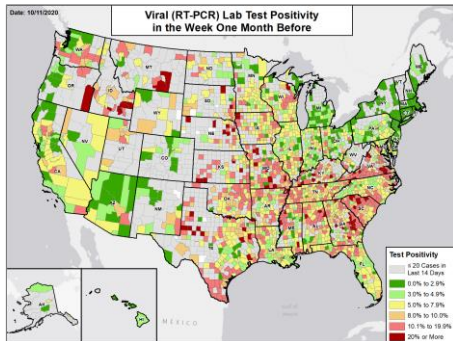
National Rank	State	National Rank	State
1	NE	27	MN
2	MT	28	FL
3	ID	29	IL
4	UT	30	NM
5	CA	31	LA
6	SD	32	AZ
7	WI	33	WY
8	OK	34	WV
9	OR	35	PA
10	MO	36	MD
11	IA	37	CO
12	KY	38	MI
13	KS	39	HI
14	SC	40	OH
15	NV	41	WA
16	ND	42	NJ
17	MS	43	DE
18	TN	44	CT
19	AL	45	NH
20	AR	46	RI
21	TX	47	NY
22	IN	48	DC
23	NC	49	MA
24	AK	50	ME
25	VA	51	VT
26	GA		

## VIRAL (RT-PCR) LAB TEST POSITIVITY IN THE WEEK:

### ONE MONTH BEFORE

### TWO MONTHS BEFORE

### THREE MONTHS BEFORE



### DATA SOURCES

**Note:** Some dates may have incomplete data due to delays in reporting. Data may be backfilled over time, resulting in week-to-week changes.

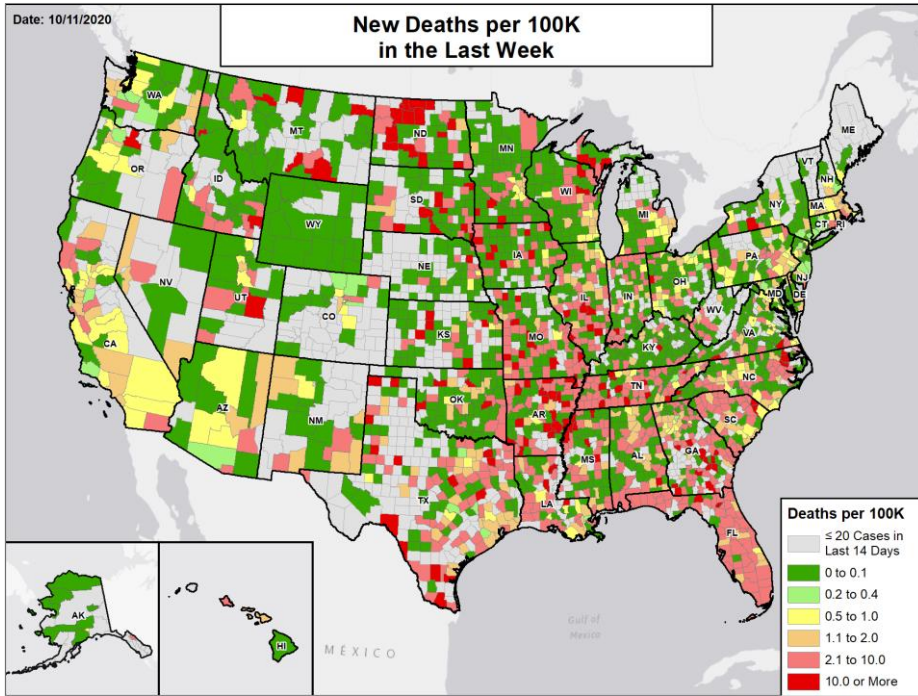
**Testing:** Combination of CELR (COVID-19 Electronic Lab Reporting) state health department-reported data and HHS Protect laboratory data (provided directly to Federal Government from public health labs, hospital labs, and commercial labs) through 10/7/2020. Last week is 10/1 - 10/7; the week one month before is 9/3 - 9/9; the week two months before is 8/6 - 8/12; the week three months before is 7/9 - 7/15.





# National Picture

## NEW DEATHS PER 100,000 LAST WEEK

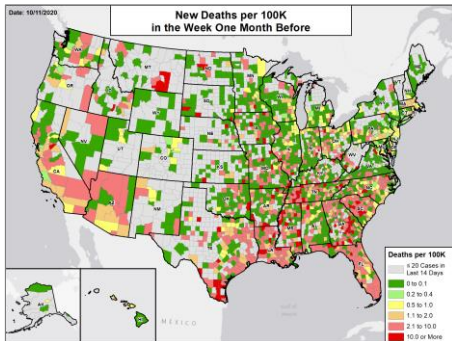


## NATIONAL RANKING OF NEW DEATHS PER 100,000 LAST WEEK

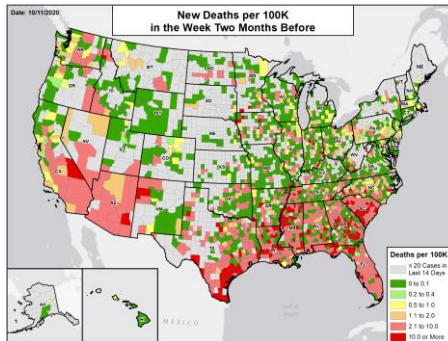
National Rank	State	National Rank	State
1	ND	27	RI
2	AR	28	MN
3	SD	29	CA
4	MO	30	UT
5	TN	31	PA
6	FL	32	NE
7	MS	33	KY
8	SC	34	MI
9	GA	35	DE
10	KS	36	OR
11	AL	37	CO
12	IA	38	OH
13	TX	39	AZ
14	LA	40	NM
15	MT	41	DC
16	ID	42	NH
17	HI	43	WA
18	IL	44	MD
19	IN	45	CT
20	NV	46	NY
21	WI	47	AK
22	NC	48	NJ
23	MA	49	ME
24	OK	50	VT
25	WV	51	WY
26	VA		

## NEW DEATHS PER 100,000 IN THE WEEK:

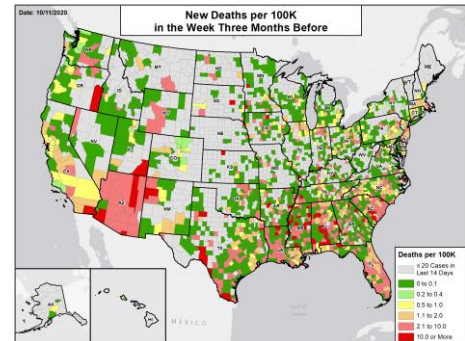
### ONE MONTH BEFORE



### TWO MONTHS BEFORE



### THREE MONTHS BEFORE



## DATA SOURCES

**Note:** Some dates may have incomplete data due to delays in reporting. Data may be backfilled over time, resulting in week-to-week changes.

**Deaths:** County-level data from USAFacts through 10/9/2020. Last week is 10/3 - 10/9; the week one month before is 9/5 - 9/11; the week two months before is 8/8 - 8/14; the week three months before is 7/11 - 7/17.



# METHODS

## STATE REPORT | 10.11.2020

**COLOR THRESHOLDS:** Results for each indicator should be taken in context of the findings for related indicators (e.g., changes in case incidence and testing volume). Values are rounded before color classification.

Metric	Dark Green	Light Green	Yellow	Orange	Red
New cases per 100,000 population per week	≤4	5 – 9	10 – 50	51 – 100	≥101
Percent change in new cases per 100,000 population	≤-26%	-25% – -11%	-10% – 0%	1% – 10%	≥11%
Diagnostic test result positivity rate	≤2.9%	3.0% – 4.9%	5.0% – 7.9%	8.0% – 10.0%	≥10.1%
Change in test positivity	≤-2.1%	-2.0% – -0.6%	-0.5% – 0.0%	0.1% – 0.5%	≥0.6%
Total diagnostic tests resulted per 100,000 population per week	≥2001	1001 – 2000	750 – 1000	500 – 749	≤499
Percent change in tests per 100,000 population	≥26%	11% – 25%	1% – 10%	-10% – 0%	≤-11%
COVID-19 deaths per 100,000 population per week	≤0.1	0.2 – 0.4	0.5 – 1.0	1.1 – 2.0	≥2.1
Percent change in deaths per 100,000 population	≤-26%	-25% – -11%	-10% – 0%	1% – 10%	≥11%
Skilled Nursing Facilities with at least one resident COVID-19 case, death	0%		1% – 5%		≥6%
Change in SNFs with at least one resident COVID-19 case, death	≤-2%		-1% – 1%		≥2%

### DATA NOTES

- Some dates may have incomplete data due to delays in reporting. Data may be backfilled over time, resulting in week-to-week changes. It is critical that states provide as up-to-date data as possible.
- Cases and deaths:** County-level data from USAFacts as of 17:35 EDT on 10/11/2020. State values are calculated by aggregating county-level data from USAFacts; therefore, values may not match those reported directly by the state. Data are reviewed on a daily basis against internal and verified external sources and, if needed, adjusted. Last week data are from 10/3 to 10/9; previous week data are from 9/26 to 10/2; the week one month before data are from 9/5 to 9/11.
- Testing:** The data presented represent viral COVID-19 laboratory diagnostic and screening test (reverse transcription polymerase chain reaction, RT-PCR) results—not individual people—and exclude antibody and antigen tests, unless stated otherwise. CELR (COVID-19 Electronic Lab Reporting) state health department-reported data are used to describe county-level viral COVID-19 laboratory test (RT-PCR) result totals when information is available on patients’ county of residence or healthcare providers’ practice location. HHS Protect laboratory data (provided directly to Federal Government from public health labs, hospital labs, and commercial labs) are used otherwise. Some states did not report on certain days, which may affect the total number of tests resulted and positivity rate values. Because the data are deidentified, total viral (RT-PCR) laboratory tests are the number of tests performed, not the number of individuals tested. Viral (RT-PCR) laboratory test positivity rate is the number of positive tests divided by the number of tests performed and resulted. Resulted tests are assigned to a timeframe based on this hierarchy of test-related dates: 1. test date; 2. result date; 3. specimen received date; 4. specimen collection date. Resulted tests are assigned to a county based on a hierarchy of test-related locations: 1. patient residency; 2. provider facility location; 3. ordering facility location; 4. performing organization location. States may calculate test positivity other using other methods. Last week data are from 10/1 to 10/7; previous week data are from 9/24 to 9/30; the week one month before data are from 9/3 to 9/9. HHS Protect data is recent as of 13:41 EDT on 10/11/2020. Testing data are inclusive of everything received and processed by the CELR system as of 19:00 EDT on 10/10/2020.
- Mobility:** Descartes Labs. These data depict the median distance moved across a collection of mobile devices to estimate the level of human mobility within a locality. The 100% represents the baseline mobility level prior to the pandemic; lower percent mobility indicates less population movement. Data is anonymized and provided at the locality level. Data is recent as of 17:33 EDT on 10/11/2020 and is through 10/7/2020.
- Hospitalizations:** Unified hospitalization dataset in HHS Protect. This figure may differ from state data due to differences in hospital lists and reporting between federal and state systems. These data exclude psychiatric, rehabilitation, and religious non-medical hospitals. In addition, hospitals explicitly identified by states/regions as those from which we should not expect reports were excluded from the percent reporting figure. The data presented represents raw data provided; we are working diligently with state liaisons to improve reporting consistency. Data is recent as of 18:19 EDT on 10/11/2020.
- Skilled Nursing Facilities:** National Healthcare Safety Network (NHSN). Data report resident and staff cases independently. Quality checks are performed on data submitted to the NHSN. Data that fail these quality checks or appear inconsistent with surveillance protocols may be excluded from analyses. Data presented in this report are more recent than data publicly posted by CMS. Last week is 9/28-10/4, previous week is 9/21-9/27.
- County and Metro Area Color Categorizations**
  - Red Zone:** Those core-based statistical areas (CBSAs) and counties that during the last week reported both new cases at or above 101 per 100,000 population, and a lab test positivity result at or above 10.1%.
  - Orange Zone:** Those CBSAs and counties that during the last week reported both new cases between 51–100 per 100,000 population, and a lab test positivity result between 8.0–10.0%, or one of those two conditions and one condition qualifying as being in the “Red Zone.”
  - Yellow Zone:** Those CBSAs and counties that during the last week reported both new cases between 10–50 per 100,000 population, and a lab test positivity result between 5.0–7.9%, or one of those two conditions and one condition qualifying as being in the “Orange Zone” or “Red Zone.”